



MATEOS.NET

for Antenna Measurement Software

Product overview

Our own developed software for Antenna measurement, named **MATEOS.NET**, enable user to customize as demanded.

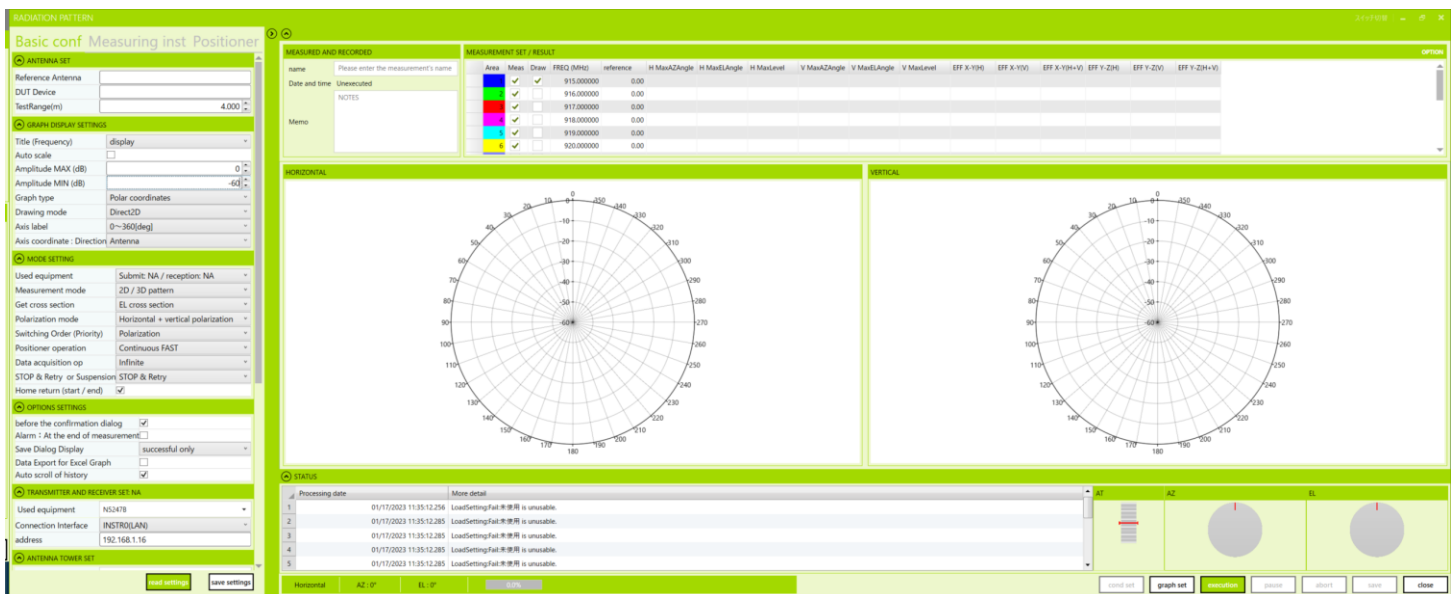
Main Features for measurement,

1. 2D antenna radiation pattern
2. 3D antenna radiation pattern
3. Mobile terminal radiation
4. mm-wave radar radiation pattern
5. RF measure for production line



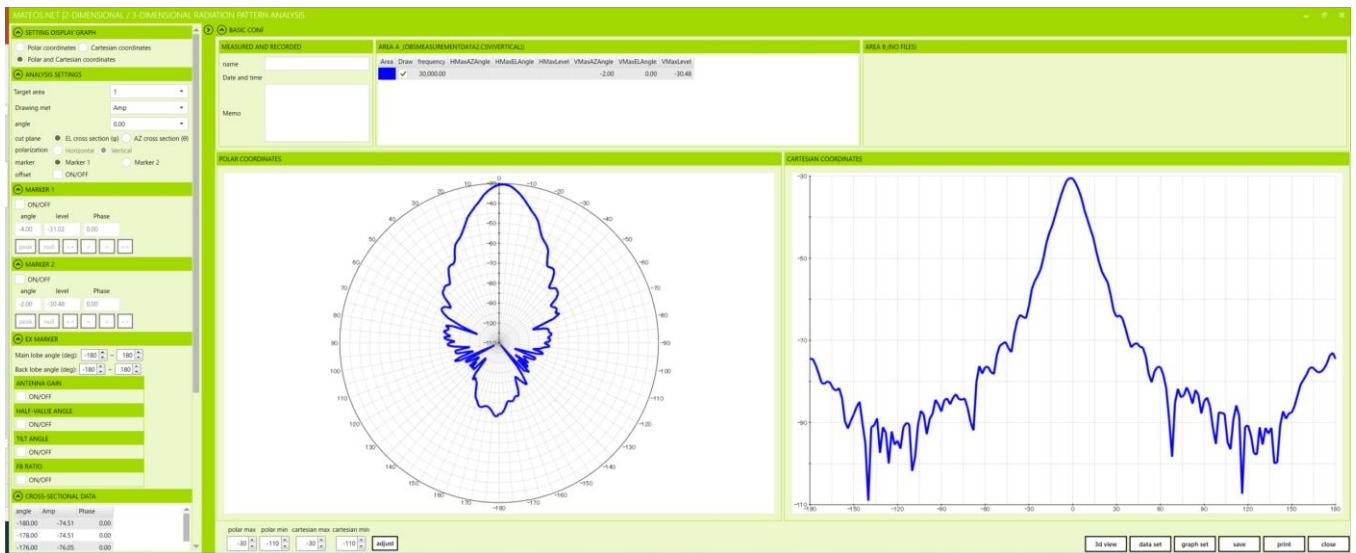
☆2D radiation pattern

Measurement by using Spectrum Analyzer, Network Analyzer.
Flexible drawing, so easy & quick to make the reports.



Available Setting parameters

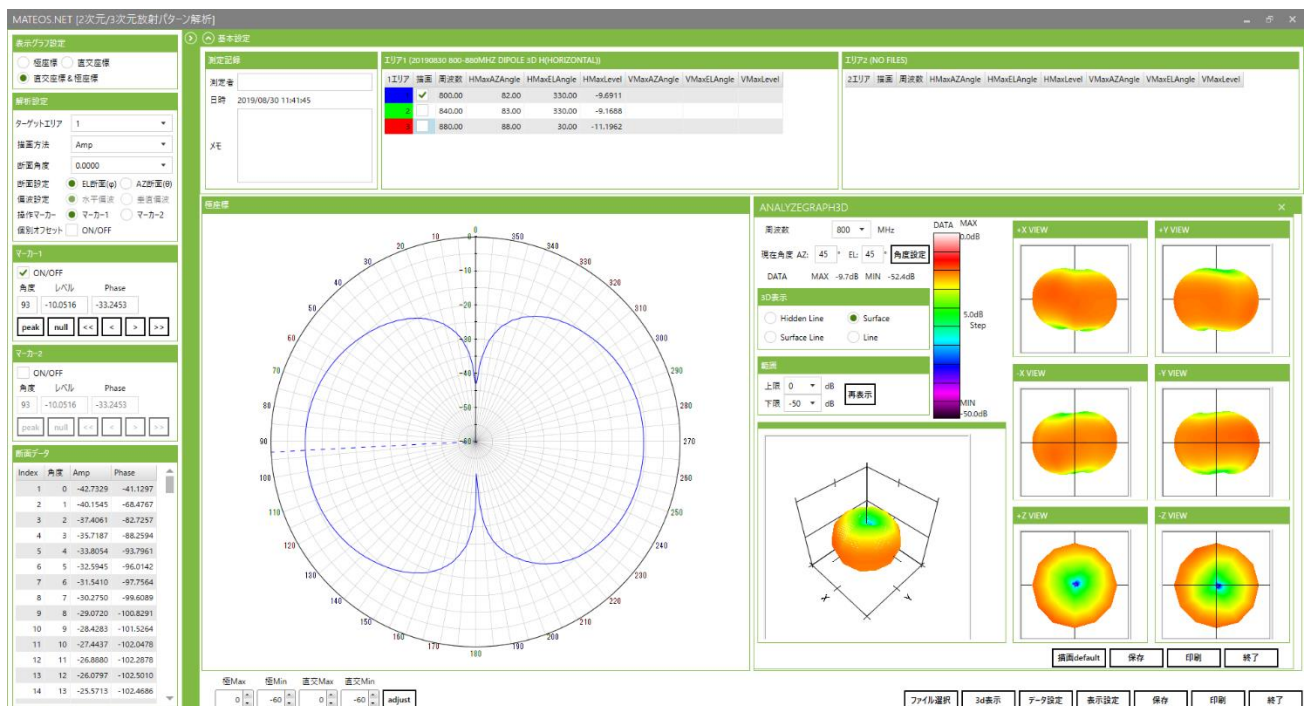
- Graph Clipping & Copy (enable to paste to Word & Excel files)
- Flexible choice the line patterns and colors (effective to reporting)
- Lever Offset function
- other supports for several measurement
 - Antenna AR (axial ratio)
 - Spinning Linear
 - Pattern average Gain (relative comparison)
 - Simple Efficiency (relative comparison)
 - Antenna Gain (relative comparison)



☆3D radiation pattern

3D display method

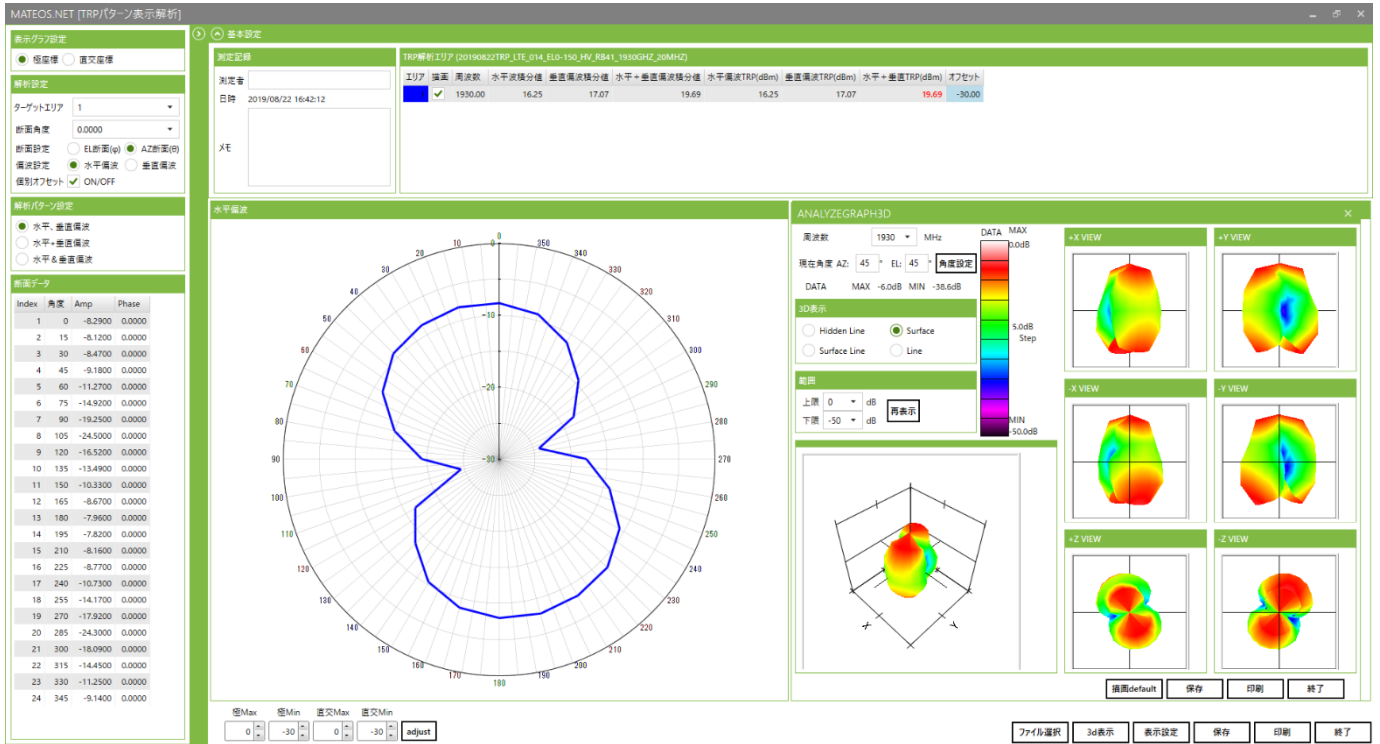
- Hidden Line
- Surface
- Surface Line
- Line
- *required 2axis positioner for 3D measurement



☆ TRP (Total spherical Radiation Power)

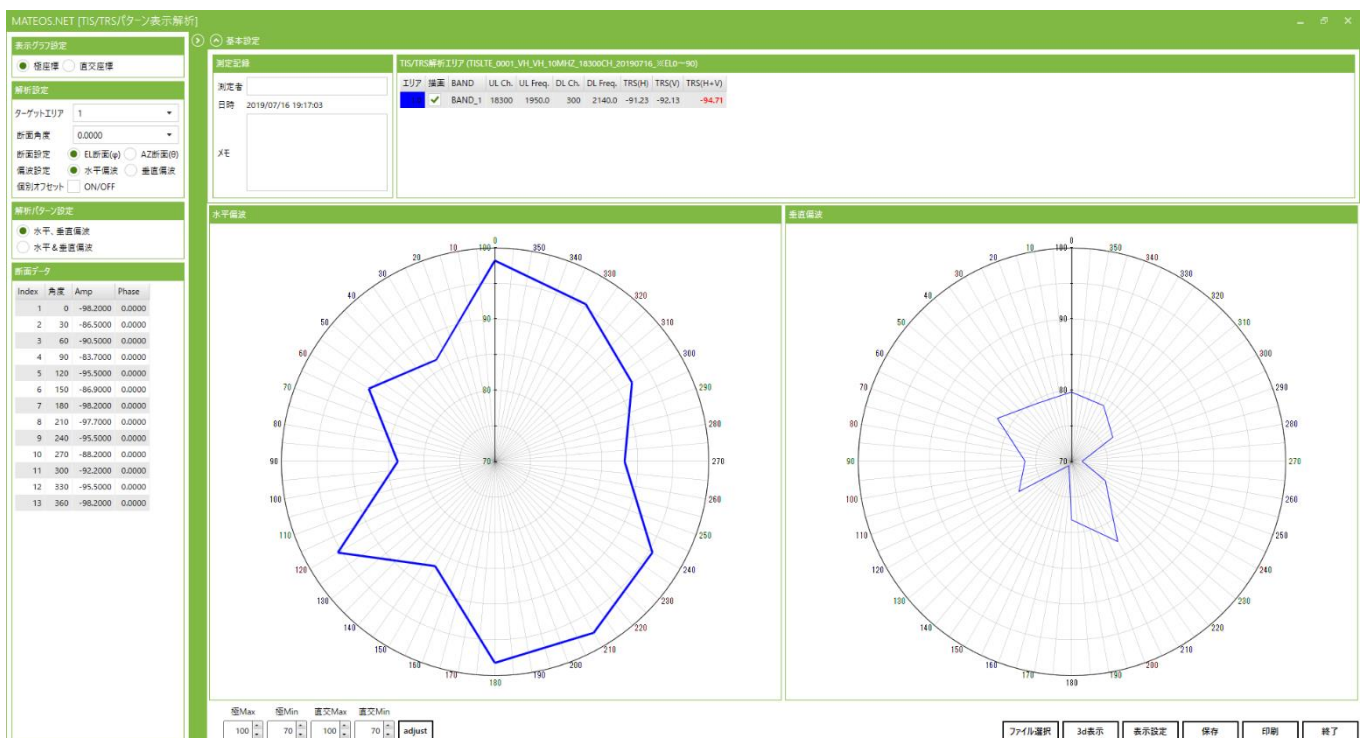
Available to measure & analyze TRP by relative comparison using reference antenna. Relative comparison would support Free-Space back calculation and Path Loss, so they are automatically calculated without details.

- Antenna Gain
- Table Loss
- Free-Space Loss



☆ TIS / TRS (Total Isotropic Sensitivity / Total Radiated Sensitivity)

Available automatic measurement of BER (Bit Error Rate) by using base station simulator for mobile devices. Enable user to have accuracy result due to detailed threshold levels (1st, 2nd and Final BER) setting, even if auto measurement.



PATTERN DRAWING DISPLAY SETTINGS
✕

TEXT DISPLAY SETTINGS

Display ALL OFF

individual setting

Angle OFF

Amplitude OFF

GRAPH ANGLE SETTING

Angle range setting

±180° ▾

Flip horizontal

DRAWING DISPLAY SELECTION

Polar coordinates Cartesian coordinates

SCALE SETTING

Y-axis X-axis

AXIS SETTING

Scale interval ▾

Pattern ▾

Line width ▾

Line color ▾

GRID LINE SETTING

Pattern ▾

Line width ▾

Line color ▾

SCALE CONTROL

Auto Fixation

GRAPH RENDER MODE

Direct2D Default

USAGE GUIDE

display

EXCEL OUTPUT

Cross-polarization discrimination output

マイクロウェーブ ファクトリー株
式会社 横浜市港北区新横浜3-
18-3 TEL;045-594-6639 WEB ;
www.mwf.co.jp

マイクロウェーブ ファクトリー株
式会社 横浜市港北区新横浜3-
18-3 TEL;045-594-6639 WEB ;
www.mwf.co.jp

マイクロウェーブ ファクトリー株
式会社 横浜市港北区新横浜3-
18-3 TEL;045-594-6639 WEB ;
www.mwf.co.jp